



THIS PRESENTATION IS DESIGNED FOR INITIAL CUSTOMER OVERVIEW OF DIMETRA IP MICRO TO BE PRESENTATED BY SALES TEAM, PRE SALES, TECHNICAL SUPPORT ETC.

It must not be used in public presentations before TETRA World Congress 26 May 2009.

IF YOU ARE REQUIRED TO PROVIDE A COPY TO YOUR CUSTOMER PLEASE CONVERT TO WMV, AVI or MPEG AND ENSURE APPROPRIATE NDA IN PLACE

MOTOROLA DIMETRA IP MICRO

Scalable TETRA Infrastructure for Commercial and Enterprise Applications



MOTOROLA DIMETRA IP MICRO

Scalable TETRA Infrastructure for Commercial and Enterprise Applications

Presenter Name

Presenter Title



“TETRA appears to be the technology of choice for transport and utility companies looking to migrate to high-end digital technology”

*TETRA has seen significant growth in Spain over the last 2 years as a large number of transport organisations have switched.
All Spanish airports are currently migrating*

“TETRA has enjoyed success in the utility and industrial sectors”

A growing number of Commercial Customers are adopting TETRA

Source: IMS Feb 2008 Report



Advanced communication Needs



Demanding Availability & Coverage





Leader in TETRA

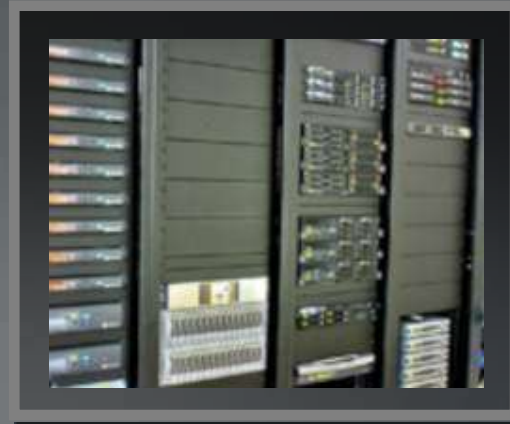
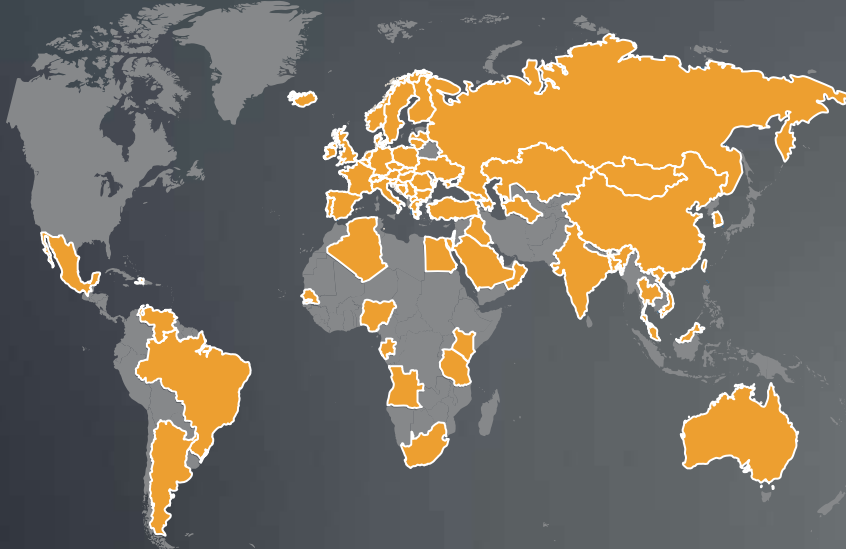


Proven Dimetra™ Solutions



Trusted by 1 Million Users

***Uniquely positioned to deliver business critical communications
Solutions for Commercial and Enterprise Customers***



Proven Dimetra™ Solutions

Motorola TETRA

150 systems sold in under 3 years

450+ Customers

Used in over 80 countries worldwide

Global Support Network



I Need:

- Heavy duty, waterproof industrial radios
- Intrinsic Safety (Factory Mutual)
- Wide Area Coverage with high traffic density
- Single-site High-Capacity trunking
- Over The Air Security
- Data Service
- Location/GPS
- Smooth migration from legacy analogue systems

MOTOTRBO™

I Need:

All the above, and ...

- Telephony Interface, and Trunking
- Wide Area Mobility
- Status Messaging
- Full Duplex Calls
- End to End Encryption between subscribers
- Intelligent Group management
- Or Access to an existing TETRA network

Dimetra™ IP Micro

**Motorola has solutions for all classes
of Commercial and Enterprise
operators**



The new member of the family, introducing:

Dimetra capability, tailored for the job

Small footprint, cost effective

Easy to install and use



Operators who have to ensure the highest levels of safety and availability as well as operability



Analogue

Enhanced Voice Services

Advanced Digital

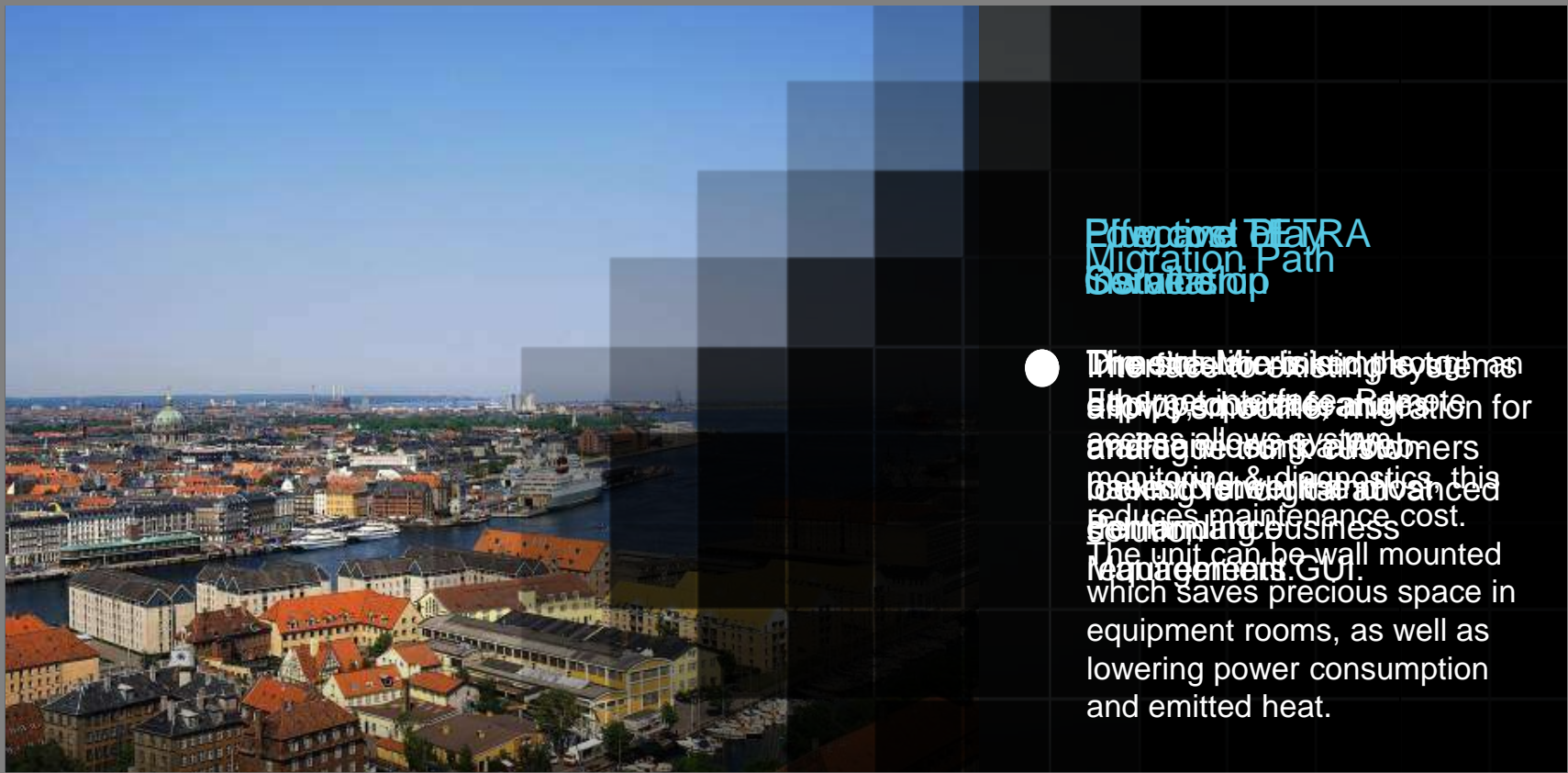


Effective TETRA Service

Scalable Solutions

Supporting Terminals

Services



Effective TETRA Migration Path

The standard existing system as a plug and play interface. Rigsets are replaced one by one for a seamless migration for areas with low volume monitoring & diagnostics, this reduces maintenance cost. The unit can be wall mounted which saves precious space in equipment rooms, as well as lowering power consumption and emitted heat.

Effective TETRA Service

Plug and Play installation

Low cost of Ownership

Migration Path



Full range of Scalable Base Stations Scalable Switches

- MTS 2 and 4 Base Stations Meet 500 personnel in field 2 or 4 Carrier
- The Motorola MCC 7500 Dispatch Console is fully IP, it connects directly to the IP network removing the need for interface boxes, digital voice gateways, or backroom electronics

Effective TETRA Service

Scalable Solutions

Consoles



Commercial and Enterprise Portfolio



**New
CEP400**

Portable



MTM800 Enhanced

CM5000 GW/RPTR



Mobile



Carrying



Energy



Mobile



Audio

Accessories



MTC100 PDA



TOM100 Modem

Data

Effective TETRA Service

Scalable Solutions

Supporting Terminals



Integration Services

- Motorola offers a full portfolio of design planning and integration services from initial concept through system planning and design to implementation and integration.

Support Services

- Motorola offers a comprehensive and flexible portfolio of support services to ensure peak performance, cost effective operations and high availability.

Value Added Services

- A range of value-added solutions to enhance efficiency, performance and security.



Value and High Performance

Premium capabilities but not a premium price

Ease of installation and Operation

Web-based GUI and installation and operation



Migration

Interfaces with existing systems to ease the migration process

IP Interfaces

Saving cost and increasing flexibility



Optional Services

Telephony service, Voice over IP telephone calls.
SDS and GPS options.

Backed by Motorola Services

Comprehensive pre and post sales support



Technology that's Second Nature™
So you can focus on your mission, not the technology.